

PHILIPS

Air Styler

5000 Series

5 styling attachments

Even heat distribution

4x more ions*

Ceramic Argan Oil



BHA530/00



Multiple hairstyles with extra care

Philips Air Styler 5000 for the easy hair styles everyday. The warm air is evenly distributed throughout the brush, while Ionic care helps your hair to shine more.

Beautifully styled hair

- Three flexible heat and speed settings for easy control
- 30 mm retractable bristle brush for defined waves
- 38 mm ThermoBrush for smooth styles and waves
- Narrow concentrator for focused airflow
- Paddle straightening brush for naturally straight look
- Volumizer for more volume at the roots
- 5 attachments

Less Hair Damage

- Less overheating with Even Heat Distribution technology

Care and protect

- Care setting for better protection while drying and styling
- Argan-oil infused ceramic plates for smooth gliding
- Cool air setting for gentle drying
- 4x more ionic care*

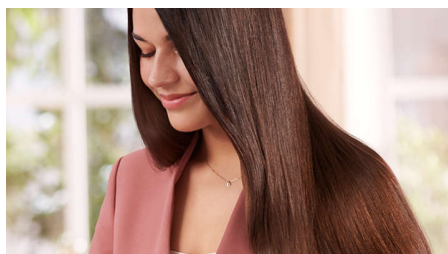
Highlights

Even Heat Distribution



The Even Heat Distribution technology provides maximum protection for your hair from overheating and thus helps to keep it healthy-looking and shiny.

4x more ionic care*



This airstyler gives your hair instant care with ionic conditioning. Charged negative ions eliminate static, condition the hair and smooth down the cuticles to intensify the hair's shine and glossiness. The result is hair that is beautifully shiny, smooth and frizz-free.

Three flexible settings



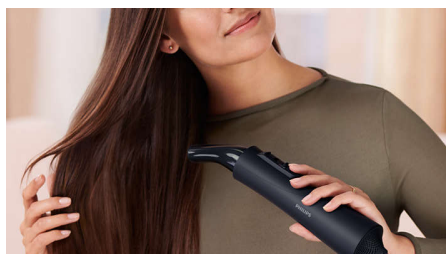
Enjoy the combined three heat and two speed settings which will create the perfect end result. You can choose between a low and high speed setting with 3 corresponding heat settings; Cool, Care and High. The flexible settings ensure a powerful airflow with a caring temperature for a precise and tailored styling.

Care setting



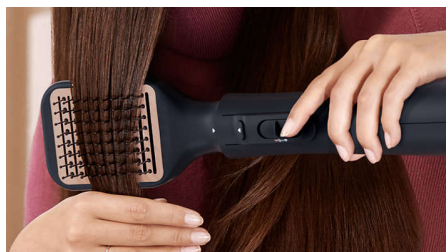
The 'Care' setting ensures the optimum drying temperature and guards against overheating. Hair still dries fast, with the same powerful airflow but at a constant, caring temperature.

Cool air setting



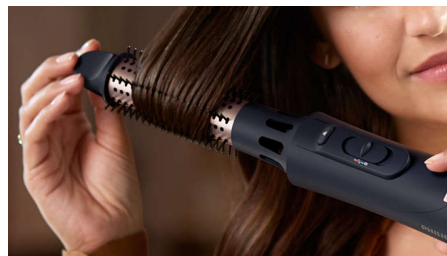
The Cool air setting uses low heat to gently dry your hair. It works especially well with fine, dry or damaged hair.

Argan-oil infused plates



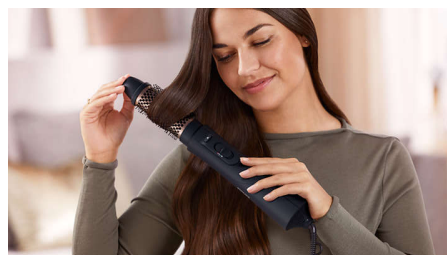
The straightener uses ceramic plates infused with argan oil to make styling fast and effortless, with a gliding action that feels as silky smooth as your hair looks.

Retractable bristle brush



The 30 mm brush with retractable bristles is designed for the easy styling. Turn the tip of the brush and slide it out for defined waves.

38 mm ThermoBrush



The ThermoBrush has an extra wide diameter of 38 mm. The width of the barrel makes it the perfect styling tool for creating smooth styles and waves.

Narrow concentrator



Use the narrow concentrator for the focused airflow for precise styling or touch-ups.

Paddle straightening brush



The paddle-shaped straightening brush is designed to help you create naturally straight look in one go.

Specifications

Technical specifications

Number of heat settings: 3 heat with 2 speed

Power

Voltage: 220-240V

Wattage: 1000W

Ease of use

Storage hook

Cable length: 2m

Attachments

Nozzle: For a focused airflow

Retractable bristle brush: For defined waves

Paddle straightening brush: For naturally straight looks

Volumizer: For volume at the roots

38 mm ThermoBrush: For smooth styles and waves

Service

2-year worldwide warranty

Caring technologies

EHD technology

Caring temperature setting

4x Ion technology: *

